



**CLIVEPEARCE**  
Now you're moving

2 Bedrooms

Cottage - Terraced

Asking Price

£205,000

Located in

Truro



[www.clivepearceproperty.com](http://www.clivepearceproperty.com)



# Kingham Terrace

Truro | Cornwall | TR1 1ES



In a very pretty traffic free terrace in the heart of the city, this two bedroom home blends classic features with modern upgrades. Delightful garden. Plenty of charm.

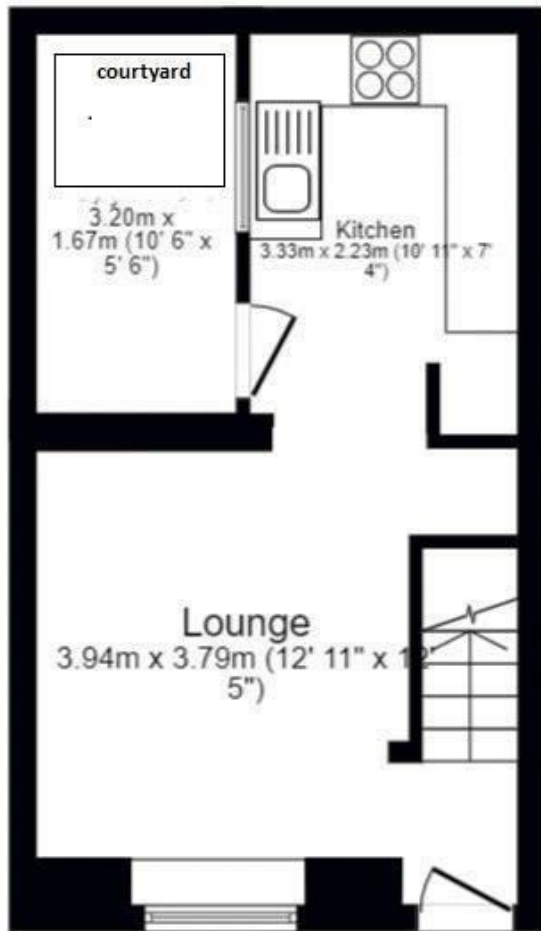


# Kingham Terrace

£205,000 Freehold



- Two bedrooms
- Kitchen
- Bathroom
- Cathedral views
- Living room
- Covered rear courtyard
- Garden
- Central location



## Council Tax Band A

## Local Authority

Agents Note: Whilst every care has been taken to prepare these particulars, they are for guidance purposes only. All measurements are approximate and are for general guidance purposes only and whilst every care has been taken to ensure their accuracy, they should not be relied upon and potential buyers/tenants are advised to recheck the measurements.

Energy Efficiency Rating		
	Current	Potential
Very energy efficient - lower running costs		
(92 plus) <b>A</b>		
(81-91) <b>B</b>		
(69-80) <b>C</b>		
(55-68) <b>D</b>		
(39-54) <b>E</b>		
(21-38) <b>F</b>		
(1-20) <b>G</b>		
Not energy efficient - higher running costs		
<b>England &amp; Wales</b>	EU Directive 2002/91/EC	

31 Lemon Street  
Truro  
Cornwall  
TR1 2LS



**CLIVEPEARCE**  
Now you're moving

hello@clivepearceproperty.com

01872 272622

www.clivepearceproperty.com